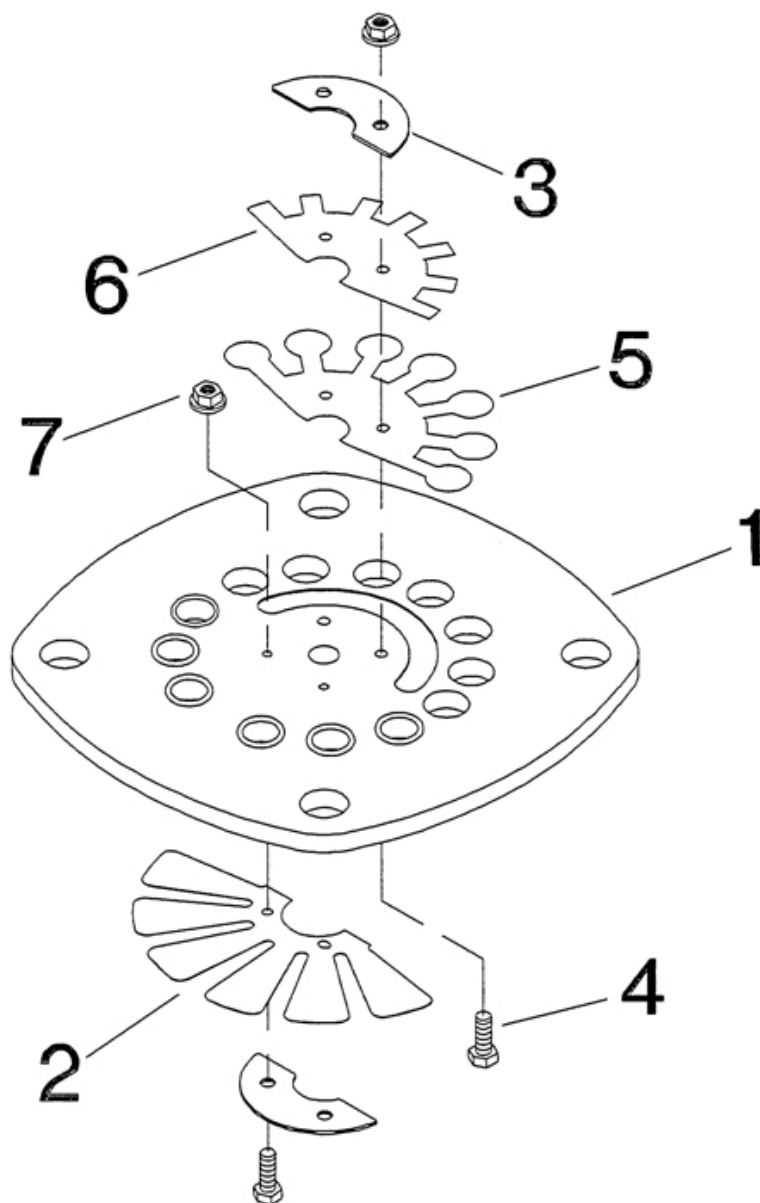


### 3. LP VALVE PLATE ASSEMBLY - MODEL 2545



All manufacturer's names, numbers, photos, product description and/or part numbers are used for reference purposes only & it is not implied that any part listed is the product of these manufacturers. Since Approvement are made from time to time, the illustration and specifications are subject to change without notice.

### 3. LP VALVE PLATE ASSEMBLY - MODEL 2545

No.	Description	Ref Part No.	QTY
REF	Assembly, Low Pressure (5") Valve Plate	32293912	1
3-1	– Plate, Low Pressure Valve	32294274	1
3-2	– Valve, Low Pressure Intake Finger	32294324	1
3-3	– Retainer, Low Pressure Intake & Discharge Valves	32294340	2
3-4	– Screw, M4 X 12 Hex Head	32247512	4
3-5	– Valve, Low Pressure Discharge Finger	32294332	1
3-6	– Damper, Low Pressure Discharge Valve	32294365	1
3-7	– Nut, M4 Hex	32248171	4