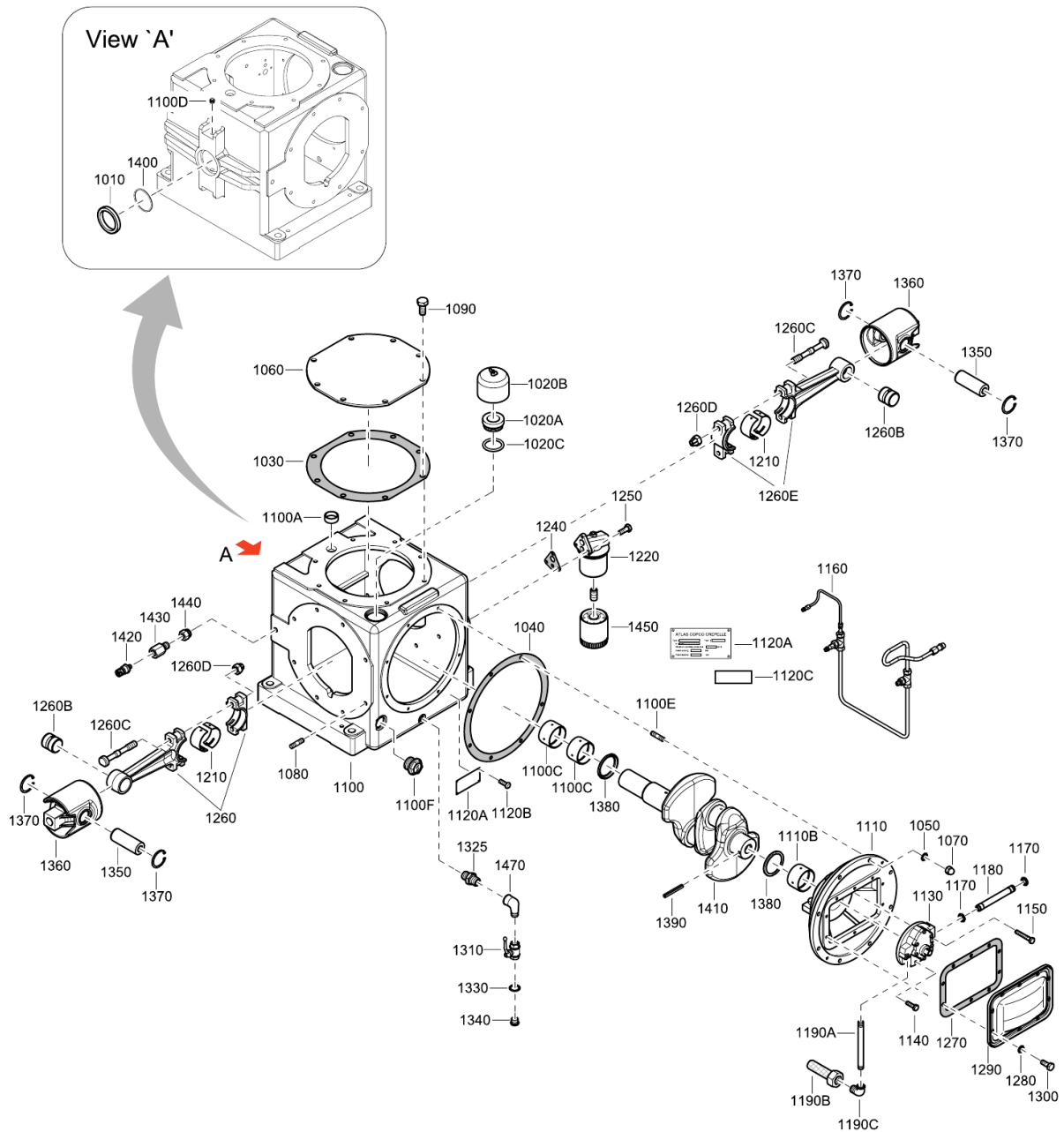


3. CRANKCASE



3. CRANKCASE

REF	PART NUMBER	QTY	DESCRIPTION	REMARKS	REF	PART NUMBER	QTY	DESCRIPTION	REMARKS
1010	0666 6000 51	1	GROOVED PACKING		1470	0560 0200 53	1	ELBOW	
1020	1901 0087 56	1	FILTER						
•1020A	1901 0367 02	1	ADAPTER						
•1020B	1901 0039 08	1	CARTRIDGE						
•1020C	0663 2112 06	1	O-RING						
1030	1901 0037 73	1	PAPER GASKET						
1040	1901 0037 72	1	PAPER GASKET						
1050	0653 1076 00	8	COPPER GASKET						
1060	1901 0079 67	1	INSPECTION DOOR						
1070	0277 1311 00	8	NUT						
1080	1901 0096 78	16	STUD						
1090	0147 1437 03	8	SCREW						
1100	1901 0602 39	1	ASSEMBLY CRANKCASE						
•1100A	1901 0063 05	1	PLUG						
•1100C	1901 0000 52	2	BEARING BUSH						
•1100D	1901 0556 94	1	SOCKET PLUG						
•1100E	1901 0028 86	8	STUD						
•1100F	1901 0030 11	1	LEVEL PLUG						
1110	1901 0096 80	1	ASSEMBLY COVER						
•1110B	1901 0000 52	1	BEARING BUSH						
1120	-	1	ASSEMBLING FIRM PLATE						
•1120A	1901 0631 52	1	LABEL						
•1120B	0244 4184 00	4	RIVET						
•1120C	1901 0557 13	1	STICKER FOR RECIP OIL						
1130	1901 0033 56	1	COUPLED OIL PUMP						
1140	0147 1325 03	1	SCREW						
1150	0147 1330 03	2	SCREW						
1160	1901 9041 42	1	KIT OIL PIPING						
1170	0663 2112 08	2	O-RING						
1180	1901 0082 23	1	TUBE						
1190	1901 0081 41	1	PIPE						
•1190A	0070 6300 70	AR	PIPE						
•1190B	1901 0074 03	1	FILTER						
•1190C	0560 1304 03	1	PIPE ELBOW						
1210	1901 0000 51	2	BEARING BUSH						
1220	1901 0041 04	1	FLANGE						
1240	1901 0037 71	1	GASKET						
1250	0147 1325 03	3	SCREW						
1260	1901 0027 41	2	CONNECTING ROD ASSEMBLY						
•1260B	1901 0000 53	2	BEARING BUSH						
•1260C	1901 0029 42	4	BIG END BOLT						
•1260D	1901 0029 08	4	NUT						
1270	1901 0038 29	1	GASKET						
1280	0653 1046 00	10	COPPER GASKET						
1290	1901 0033 48	1	DOOR ASSEMBLY						
1300	0147 1360 03	10	SCREW						
1310	1619 6153 04	1	BALL VALVE						
1325	0603 4104 03	1	NIPPLE						
1330	0653 1124 00	1	COPPER GASKET						
1340	0686 6444 03	1	PLUG						
1350	1901 0041 67	2	CROSSHEAD PIN						
1360	1901 0702 05	2	CROSSHEAD						
1370	0335 2141 00	4	SNAP RING						
1380	1901 0027 14	2	THRUST RING						
1390	0108 1365 00	1	PIN						
1400	0663 9258 01	1	O-RING						
1410	1901 0598 42	1	CRANKSHAFT						
1420	1089 9625 34	1	PRESSORE SENSOR						
1430	1901 0049 45	1	SLEEVE						
1440	1901 0044 99	1	REDUCT RING						
1450	1901 9026 74	1	KIT OIL FILTER						