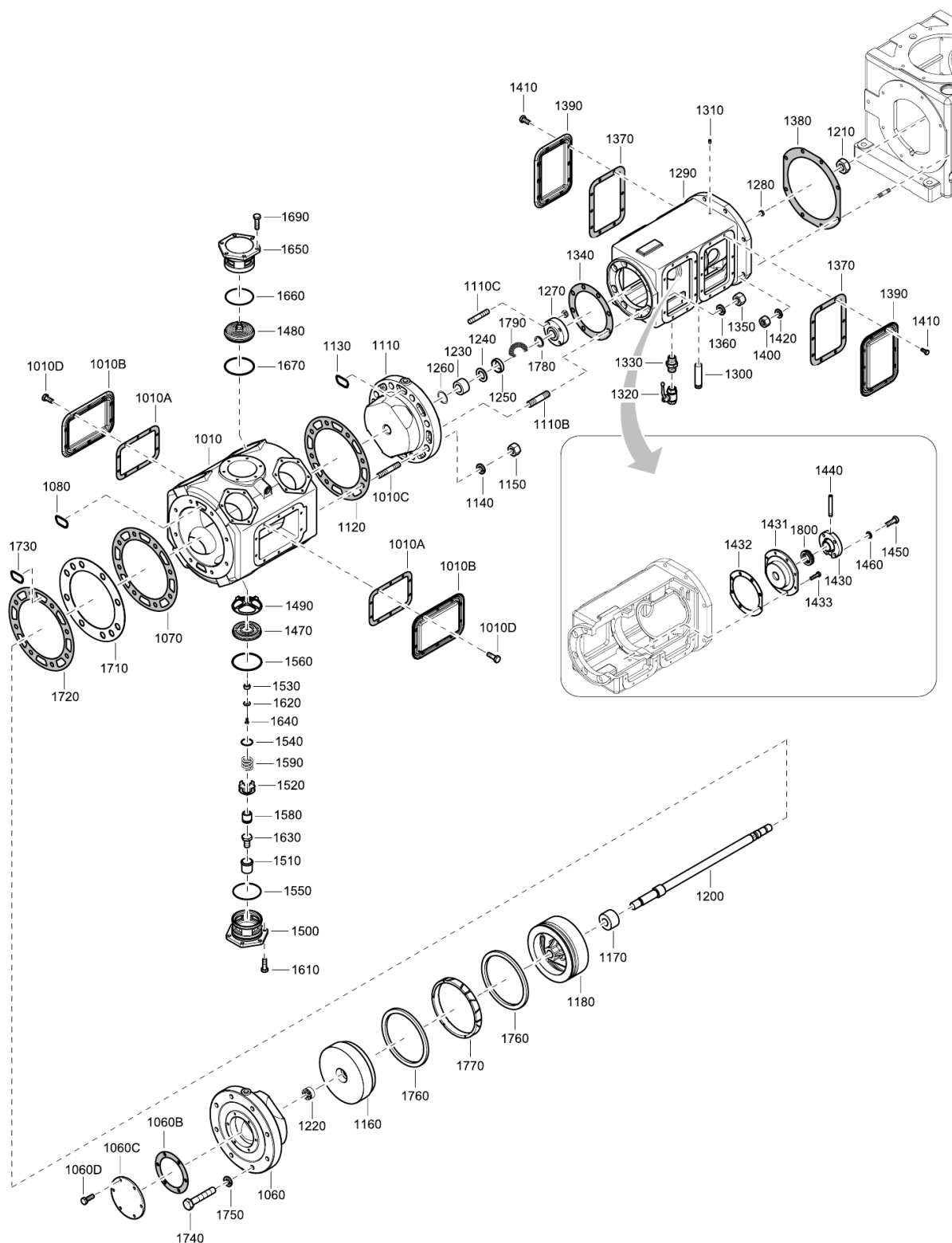


4. FIRST STAGE



4. FIRST STAGE

REF	PART NUMBER	QTY	DESCRIPTION	REMARKS	REF	PART NUMBER	QTY	DESCRIPTION	REMARKS
1010	1901 0605 21	1	CYLINDER		1530	1901 0038 46	4	CLUT FINGER	
•1010A	1901 0044 76	2	SEAL STRIP		1540	0663 2112 30	4	O-RING	
•1010B	1901 0033 48	2	DOOR ASSEMBLY		1550	0663 2112 22	4	O-RING	
•1010C	1901 0028 72	8	STUD		1560	0653 0500 49	4	COPPER GASKET	
•1010D	0147 1359 03	20	SCREW		1580	1901 0033 97	4	UNLOADER PISTON	
1060	1901 0027 27	1	BACK END CYLINDER HEAD		1590	1901 0033 28	4	LOCK SPRING	
•1060B	1901 0038 31	1	GASKET		1610	0147 1363 03	24	SCREW	
•1060C	1901 0062 65	1	PLATE		1620	0300 0274 64	4	WASHER	
•1060D	0147 1362 03	6	SCREW		1630	1901 0028 15	4	GRUB SCREW	
1070	1901 0038 35	1	GASKET		1640	0147 1204 03	4	SCREW	
1080	1901 0038 03	2	PAPER GASKET		1650	1901 0717 58	4	LANTERN COVER	
1110	1901 0027 29	1	CRANK END CYLINDER HEAD		1660	0663 2112 22	4	O-RING	
•1110B	1901 0062 69	8	STUD		1670	0653 0500 49	4	COPPER GASKET	
•1110C	1901 0028 81	4	STUD		1690	0147 1363 03	24	SCREW	
1120	1901 0038 35	4	GASKET		1710	-	1	PLATE	
1130	1901 0038 03	4	PAPER GASKET			1901 0086 62		TEMP ASP < 40°C	
1140	0333 2174 30	8	SPRING WASHER			1901 0551 76		TEMP ASP > 40°C	
1150	0266 2114 00	8	NUT		1720	1901 0038 35	1	GASKET	
1160	1901 0638 75	1	HALF PISTON		1730	1901 0038 03	4	PAPER GASKET	
1170	1901 0085 27	1	BACKING BUSH		1740	-	8	SCREW	
1180	1901 0638 76	1	HALF PISTON			0147 1487 03		TEMP ASP < 40°C	
1200	1901 0638 74	1	PISTON ROD			1901 0195 92		TEMP ASP > 40°C	
1210	1901 0029 24	1	NUT		1750	0333 2174 30	8	SPRING WASHER	
1220	1901 0002 23	1	NUT		1760	1901 0001 76	2	PISTON RING	
1230	1901 0062 78	1	FERRULE		1770	1901 0001 86	1	BEARING RING	
1240	1901 0062 79	5	FERRULE		1780	1901 0000 70	8	PACKING RING	
1250	1901 0062 80	4	DISTANCE BUSH		1790	1901 0001 43	8	LOCK SPRING	
1260	0653 0500 56	1	ALUMINIUM GASKET		1800	1901 0000 80	1	WIPER RING	
1270	1901 0033 44	1	FLANGE						
1280	1901 0615 37	1	PACKING SLEEVE						
1290	1901 0642 76	1	SPACER						
1300	1901 0115 99	1	PIPING						
1310	0194 1320 00	1	SCREW						
1320	0852 0010 05	1	BALL VALVE						
1330	0603 4103 03	1	NIPPLE						
1340	1901 0037 98	1	PAPER GASKET						
1350	0266 2114 00	8	NUT						
1360	0333 2174 30	8	SPRING WASHER						
1370	1901 0038 29	4	SEAL STRIP						
1380	1901 0037 73	1	PAPER GASKET						
1390	1901 0033 48	4	DOOR ASSEMBLY						
1400	0266 2113 00	8	NUT						
1410	0147 1360 03	40	SCREW						
1420	0333 2174 22	8	SPRING WASHER						
1430	1901 0708 86	1	COVER						
1431	1901 0708 85	1	OIL PACKING						
1432	1901 0743 42	1	GASKET						
1433	0147 1323 03	4	SCREW						
1440	1901 0031 57	1	TUBE						
1450	0147 1363 03	4	SCREW						
1460	0333 3232 00	4	SPRING WASHER						
1470	-	4	SUCTION VALVE						
	1901 0701 41		37kW						
	1901 0031 23		45kW to 65 kW						
1480	-	4	DISCHARGE VALVE						
	1901 0701 42		37kW						
	1901 0031 22		45kW to 65 kW						
1490	1901 0038 47	4	LOUVER						
1500	1901 0717 57	4	LANTERN COVER						
1510	1901 0040 20	4	CYLINDER						
1520	1901 0040 17	4	CLUT FINGER						