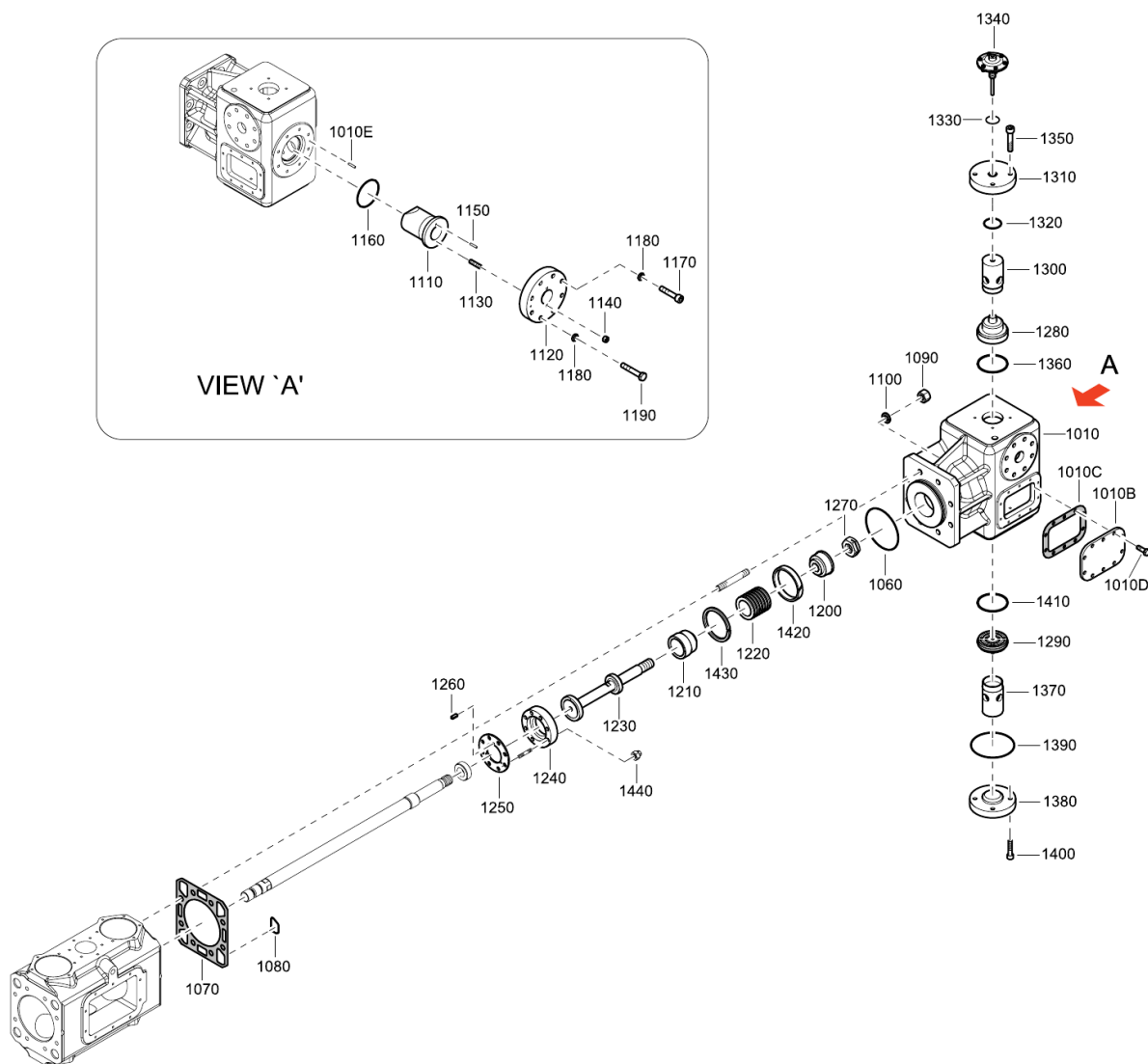


6. THIRD STAGE



6. THIRD STAGE

REF	PART NUMBER	QTY	DESCRIPTION	REMARKS
1010	1901 0607 61	1	CYLINDER ASSEMBLY	
•1010B	1901 0076 50	2	VISIT DOOR	
•1010C	1901 0025 98	2	GASKET	
•1010D	0147 1362 03	20	SCREW	
•1010E	0106 2281 00	1	PIN	
1060	0663 2112 35	1	ORING	
1070	1901 0038 34	1	GASKET	
1080	1901 0038 04	4	PAPER GASKET	
1090	0266 2114 00	8	NUT	
1100	0333 2174 30	8	SPRING WASHER	
1110	1901 0095 21	1	BACK CYLINDER HEAD	
1120	1901 0095 20	1	FLANGE ASSY	
1130	1901 0095 22	2	STUD	
1140	0266 2110 00	2	NUT	
1150	0108 1296 00	1	PIN	
1160	0663 2111 99	1	O-RING	
1170	0211 1406 03	6	SCREW	
1180	0333 2174 29	8	SPRING WASHER	
1190	0147 1964 24	2	SCREW	
1200	1901 0549 74	1	HALF PISTON	
1210	1901 0549 75	1	HALF PISTON	
1220	1901 0549 76	1	INSERTED RING	
1230	1901 0085 19	1	PISTON ROD	
1240	1901 0085 20	1	INSERTED RING	
1250	1901 0085 25	1	INSERTED RING	
1260	0108 1236 00	1	PIN	
1270	1901 0002 23	1	NUT	
1280	1901 0026 60	1	SUCTION VALVE	
1290	1901 0026 59	1	DISCHARGE VALVE	
1300	1901 0081 54	1	SUCTION VALVE BOX	
1310	1901 0550 08	1	COVER	
1320	0663 2112 32	1	ORING	
1330	0661 1033 00	1	SEAL RING	
1340	1901 0026 61	1	SERVO CYLINDER	
1350	0211 1366 03	4	SCREW	
1360	0653 0500 57	1	COPPER GASKET	
1370	1901 0026 65	1	VALVE BOX	
1380	1901 0550 09	1	COVER	
1390	0663 2112 32	1	ORING	
1400	0211 1366 03	4	SCREW	
1410	0653 0500 58	1	COPPER GASKET	
1420	1901 0000 12	2	BEARING RING	
1430	1901 0000 11	6	PISTON RING	
1440	1901 0029 06	8	NUT	